

> CC-HP

High performance ducted axial fans



DESCRIPTION

The Tube axial fans of CC-HP series are used for ducted/ non ducted installation required large air flow with relatively low pressure drop, general ventilation and extraction, cooling and refrigeration in industrial, naval commercial, civil, energetic fields, electromechanical cooling, environmental control -crop storage, petrochemical process ventilation, This series has the advantage of being smaller in dimension and easier to install. The series consist of different sizes with impeller diameter from 400 to 1250 mm. CC-HP fans can be fitted with motor of different polarity, depending required performances. Suitable for conveying clean air with temperature from -10°C to 50°C in (S1) continuous service.

CONSTRUCTION

- Short Casing in steel sheet, with fixing flanges manufactured according to UNI ISO 6580-EUROVENT standard.
- Protected against atmospheric agent by HDG. Fully adjustable high performance Axial Impeller with aero-foil profile blades and hub in Die Cast Aluminium, x-ray Inspection, multiple blade configurations for optimum performance, all impeller are statically and dynamically balanced according ISO1940 and AMCA 204 Standard.
- Variable pitch angle in still position with setting means, Impeller directly coupled to the motor and air flow from motor to impeller, all fans after assembly are trim-balanced to ISO1940 and AMCA 204 standard.

MOTOR

Asynchronous three/single phase Motor according to international standard IEC 600034, IEC 60072, EMC 2004/108/CE LVD 2006/95/CE Marked IP 55 CL F/H

ACCESSORIES

- Flat(CCr)/Conical (CCrc) Protection guard
- Flexible Connector (CCga).
- Support feet(CCst).
- Inlet/Outlet bell Mouth (CCbo).
- Silencer with or without Pod, in three lengths (CCsa & CCsb).
- Counter Flange (CCf)/ Counter Flange with collar (CCfc)
- Anti-Vibration mounts

UPON REQUEST

- Performances differing from standard
- Long and medium mild steel casing version.
- Casing protection by epoxy Galvanised.
- Air flow from impeller to motor
- External terminal box (IP 55/65)
- Multi-stage versions for higher pressure development (ISO-rotating or contra-rotating)
- Energy saving with IE2 / IE3 motor.
- Back Draught Damper
- Explosion proof with ATEX directive
- Completely reversible impeller



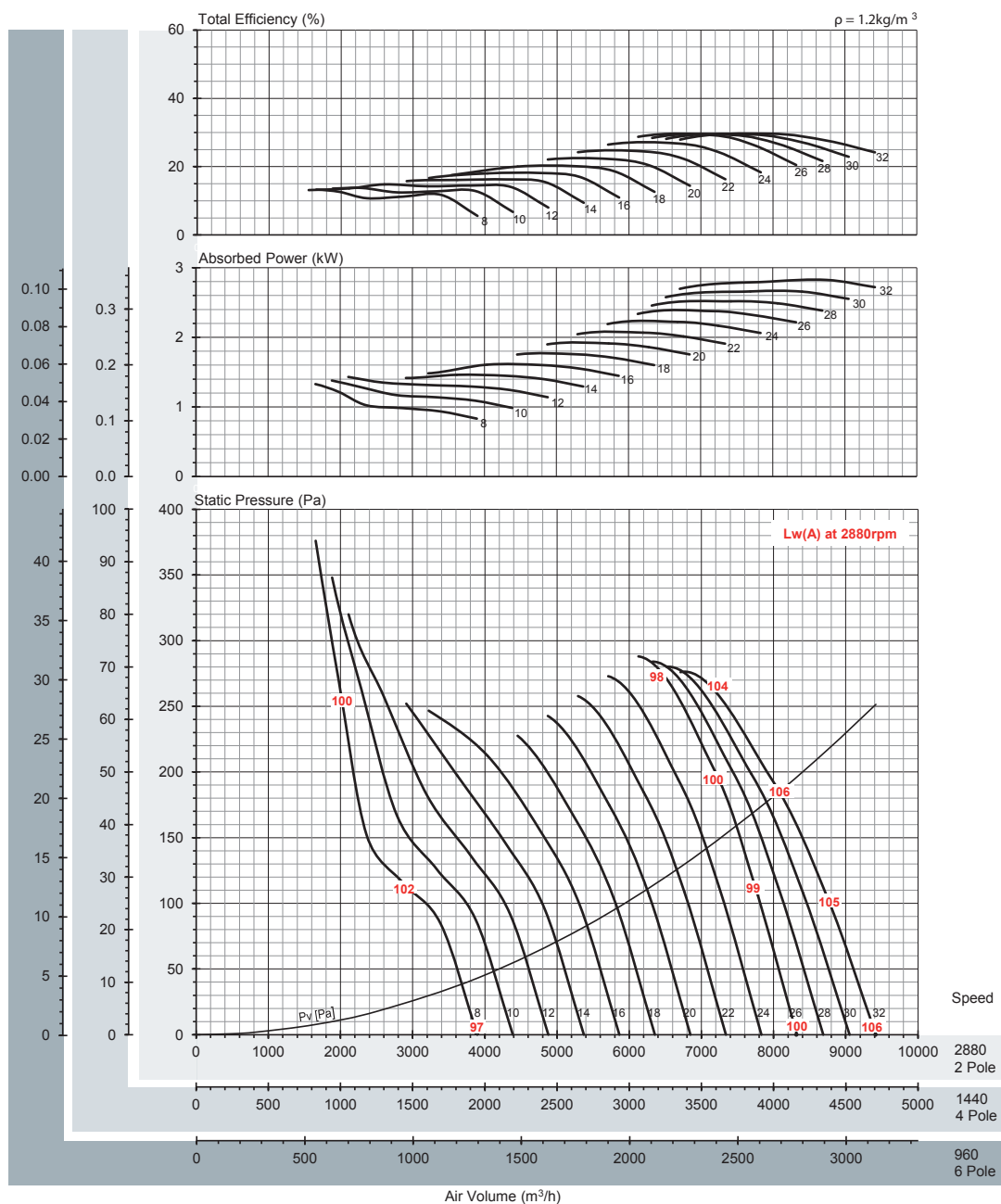
DYNAIR model CC 400 HP to CC 1250 HP shown herein are licensed to bear the AMCA Seal. The ratings shown are based on tests and procedures performed in accordance with AMCA Publication 211 and AMCA Publication 311 and comply with the requirements of the AMCA Certified Ratings Program. The AMCA Certified Ratings Seal applies to air performance and sound for Models CC400HP to CC1250HP only. The AMCA Certified Ratings Seal applies to FEG for models CC500HP to CC1250HP only.

Performance certified is for installation type D - Ducted inlet, Ducted outlet. Performance ratings do not include the effects of appurtenances (accessories).

The A-weighted sound ratings shown have been calculated per AMCA International Standard 301. Values shown are for inlet LwA sound power levels for installation type D: ducted inlet, ducted outlet. Ratings include the effects of duct end correction.
Power supply 415V/3Ph/50Hz.

50 Hz CC400/9T HP

Hub size : 210mm



Peak Absorbed Power (kW)

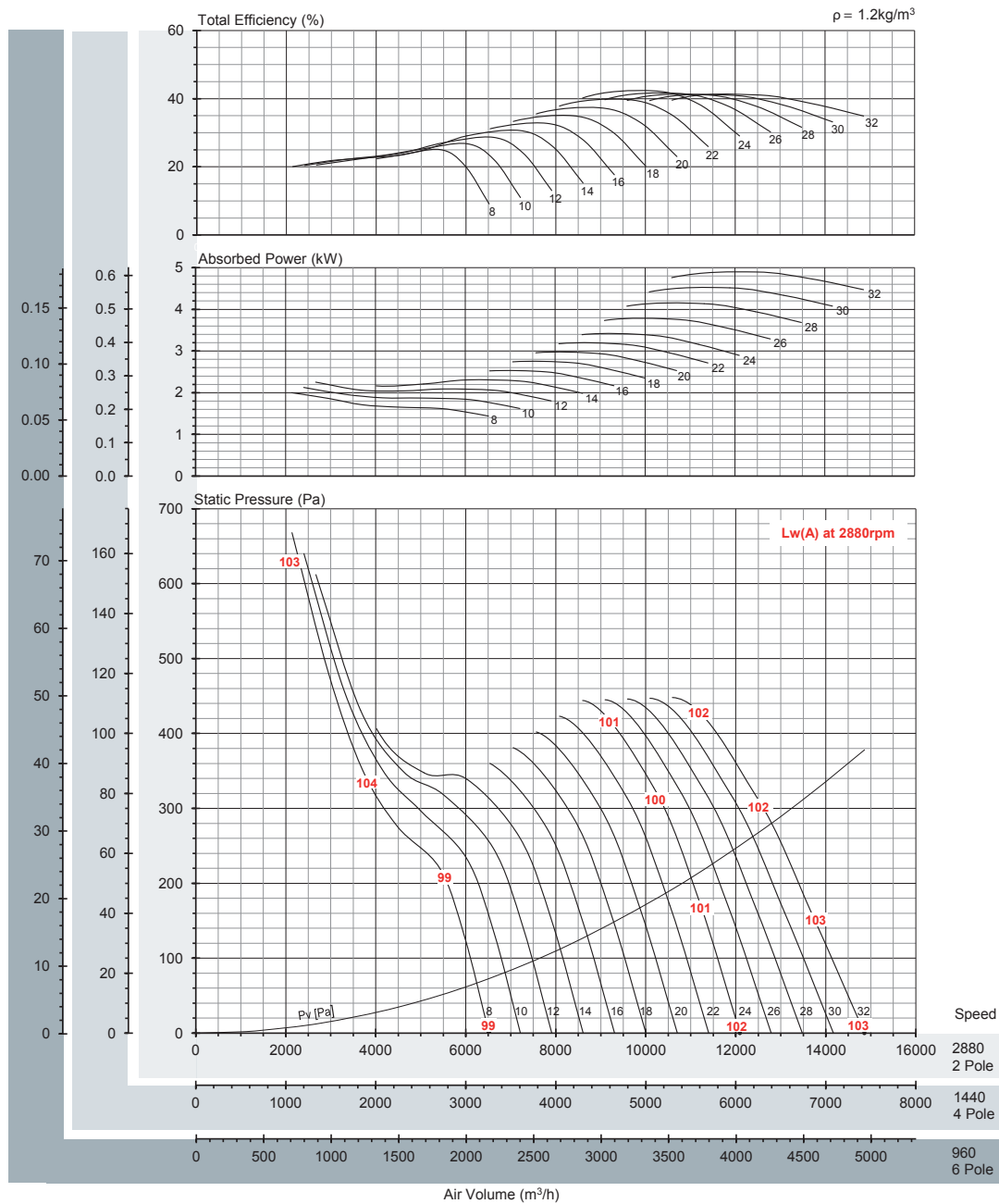
N (rpm)	Blade Pitch Angle [°]													LwA dB(A)
	8°	10°	12°	14°	16°	18°	20°	22°	24°	26°	28°	30°	32°	
960 motor	0.049	0.051	0.053	0.054	0.060	0.065	0.071	0.077	0.082	0.088	0.093	0.098	0.105	-30
1440 motor	0.166	0.173	0.179	0.183	0.201	0.220	0.239	0.258	0.278	0.297	0.315	0.332	0.353	-19
2880 motor	1.328	1.380	1.431	1.461	1.607	1.757	1.912	2.067	2.221	2.376	2.517	2.659	2.824	0

Performance certified is for installation type D - Ducted inlet, Ducted outlet. Performance ratings do not include the effects of appurtenances (accessories).

The A-weighted sound ratings shown have been calculated per AMCA International Standard 301. Values shown are for inlet LwA sound power levels for installation type D: ducted inlet, ducted outlet. Ratings include the effects of duct end correction.
Power supply 415V/3Ph/50Hz.

50 Hz CC 450/9T HP

Hub size : 210mm



Peak Absorbed Power (kW)

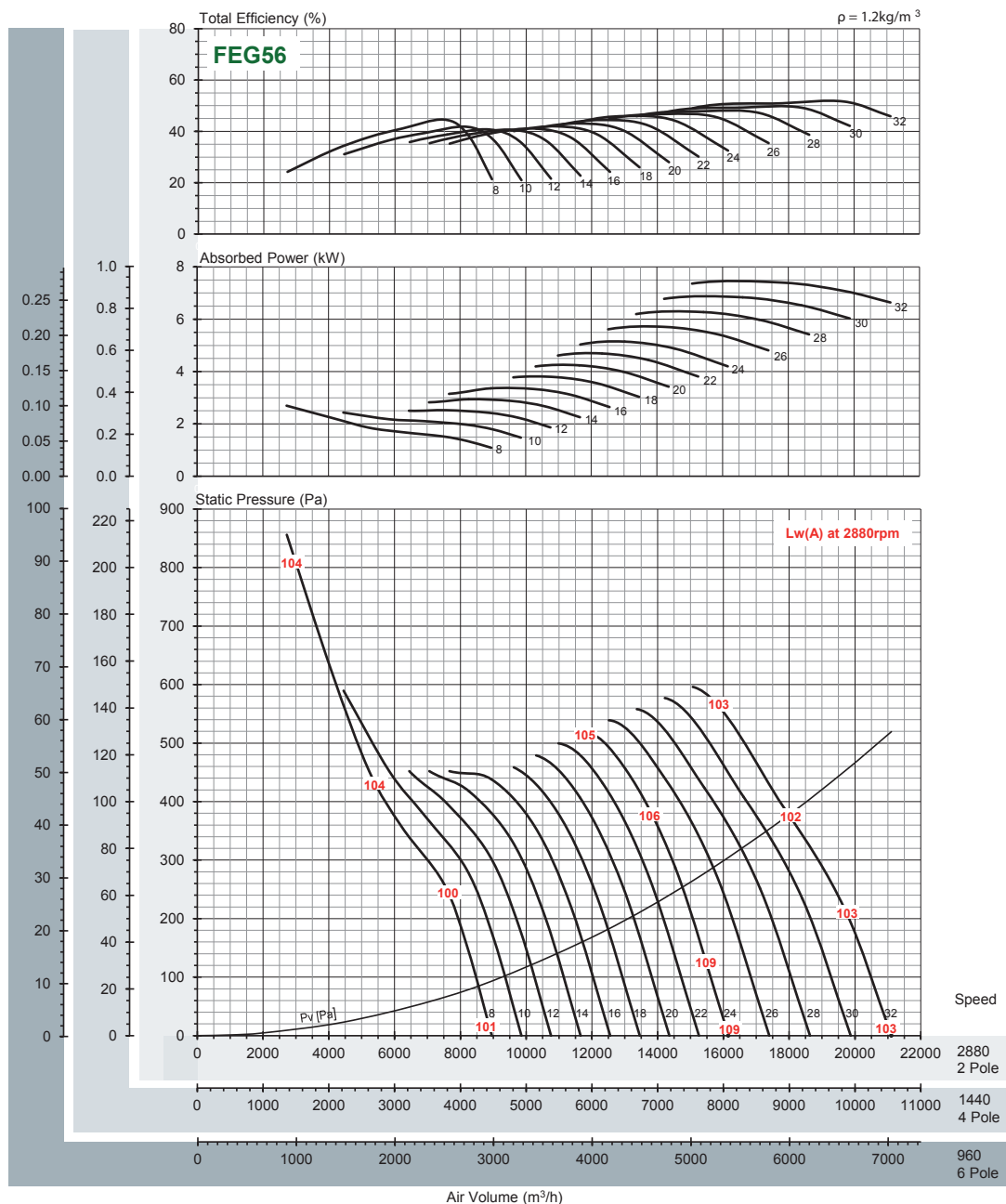
N (rpm)	Blade Pitch Angle [°]														LwA dB(A)
	8°	10°	12°	14°	16°	18°	20°	22°	24°	26°	28°	30°	32°		
960 motor	0.074	0.079	0.083	0.085	0.093	0.102	0.110	0.118	0.126	0.139	0.153	0.167	0.181	-29	
1440 motor	0.250	0.266	0.282	0.288	0.316	0.343	0.370	0.397	0.424	0.470	0.517	0.565	0.612	-18	
2880 motor	2.000	2.127	2.254	2.307	2.524	2.741	2.958	3.175	3.392	3.756	4.136	4.516	4.896	0	
		2.2			3				4			5.5			

Performance certified is for installation type D - Ducted inlet, Ducted outlet. Performance ratings do not include the effects of appurtenances (accessories).

The A-weighted sound ratings shown have been calculated per AMCA International Standard 301. Values shown are for inlet Lw(A) sound power levels for installation type D: ducted inlet, ducted outlet. Ratings include the effects of duct end correction.
Power supply 415V/3Ph/50Hz.

50 Hz CC 500/9T HP

Hub size : 210mm



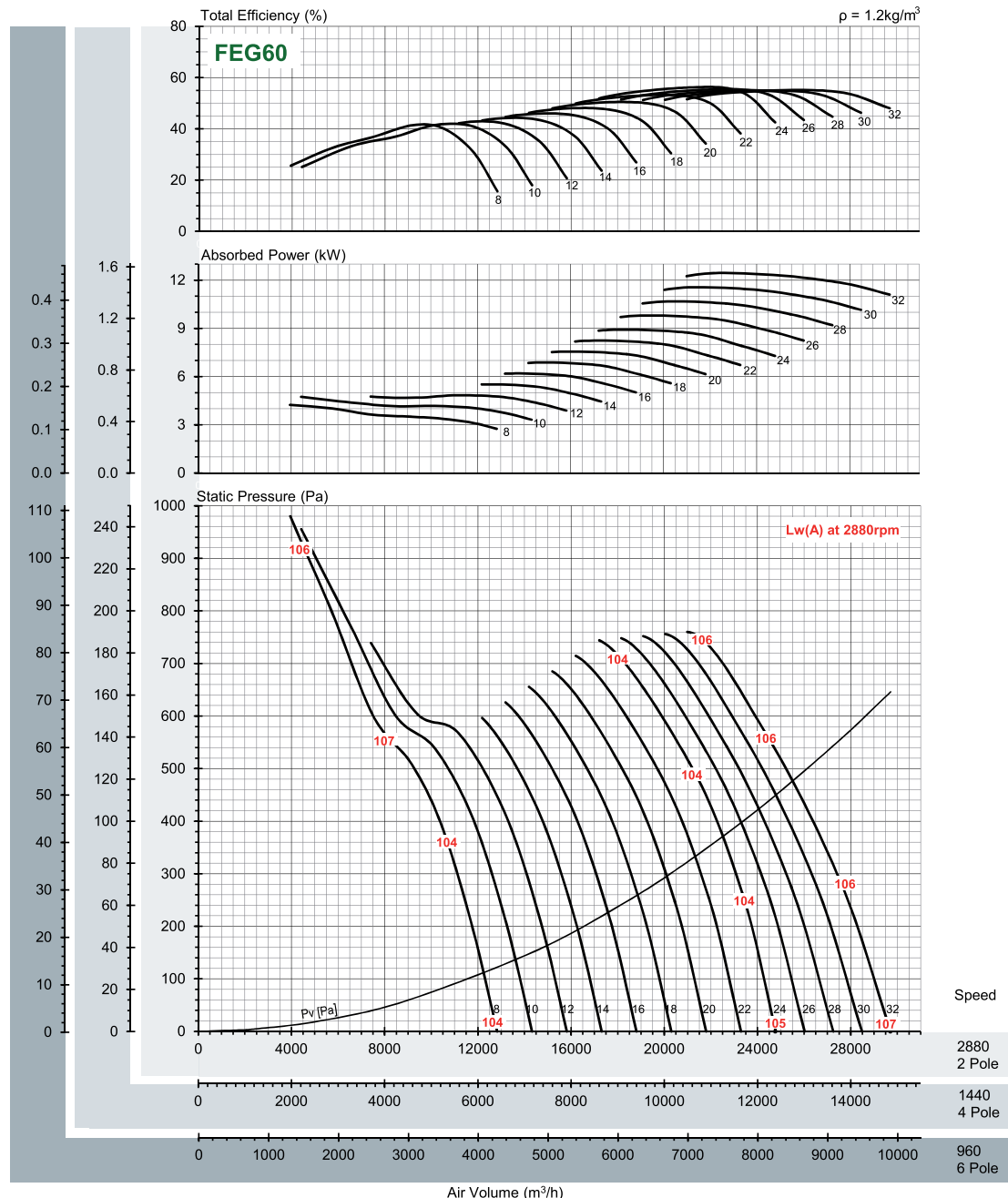
N (rpm)	Peak Absorbed Power (kW)												LwA dB(A)	
	8°	10°	12°	14°	16°	18°	20°	22°	24°	26°	28°	30°		32°
960 motor	0.100	0.090	0.093	0.109	0.124	0.140	0.157	0.174	0.191	0.211	0.232	0.253	0.274	-28
1440 motor	0.337	0.304	0.316	0.368	0.420	0.473	0.530	0.586	0.643	0.714	0.784	0.855	0.925	-17
2880 motor	2.696	2.434	2.524	2.942	3.360	3.785	4.238	4.691	5.144	5.708	6.272	6.836	7.400	0

Performance certified is for installation type D - Ducted inlet, Ducted outlet. Performance ratings do not include the effects of appurtenances (accessories).

The A-weighted sound ratings shown have been calculated per AMCA International Standard 301. Values shown are for inlet LwA sound power levels for installation type D: ducted inlet, ducted outlet. Ratings include the effects of duct end correction.
Power supply 415V/3Ph/50Hz.

50 Hz CC 560/9T HP

Hub size : 210mm



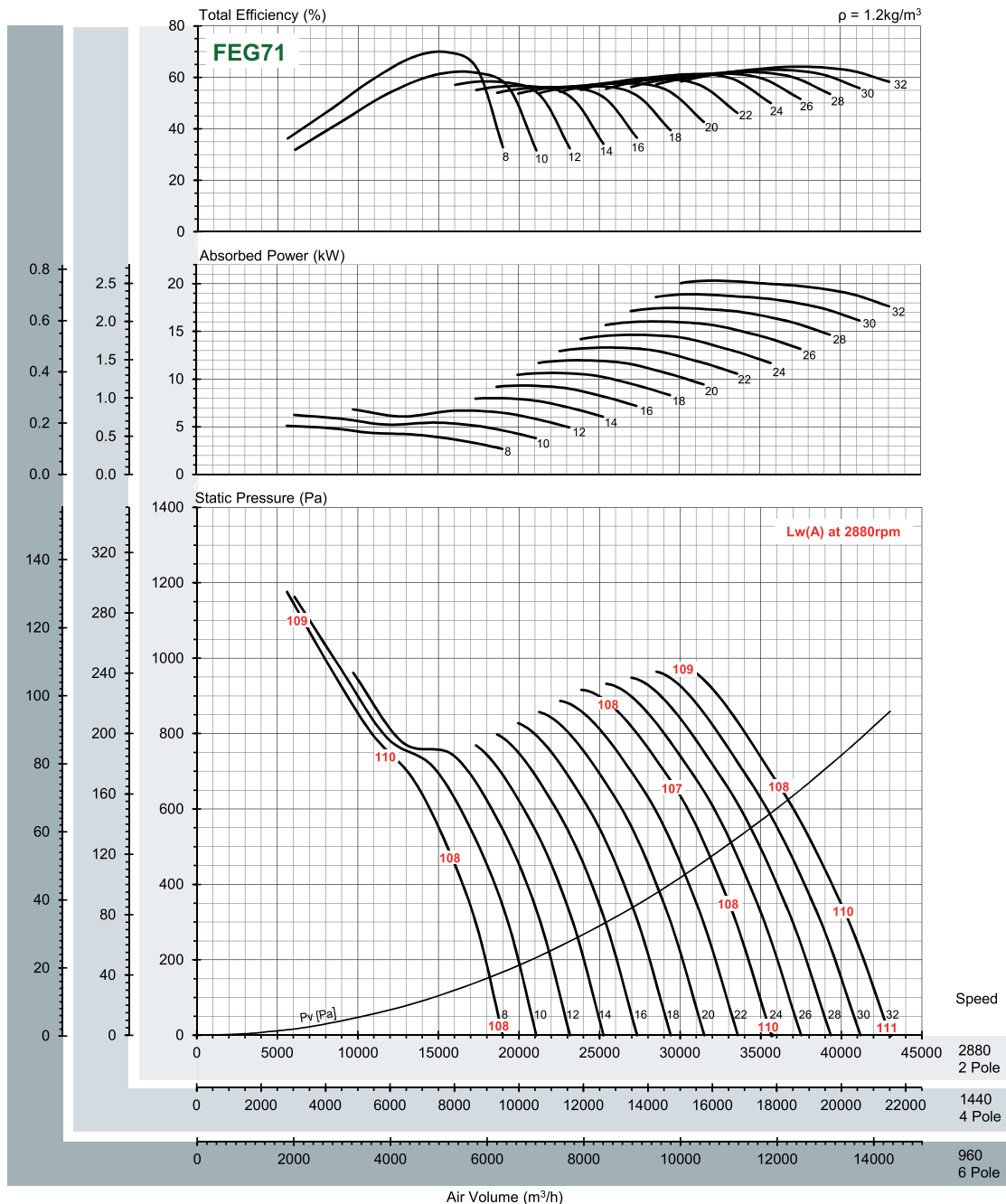
N (rpm)	Blade Pitch Angle [°]												LwA dB(A)
	8°	10°	12°	14°	16°	18°	20°	22°	24°	26°	28°	30°	
960 motor	0.157	0.176	0.179	0.213	0.229	0.252	0.278	0.315	0.328	0.359	0.391	0.424	-27
		0.18					0.37					0.55	
1440 motor	0.530	0.592	0.605	0.719	0.773	0.852	0.940	1.064	1.107	1.213	1.319	1.432	-16
		0.55	0.75			1.1				1.5		2.2	
2880 motor	4.240	4.739	4.842	5.752	6.180	6.816	7.518	8.514	8.856	9.702	10.55	11.45	0
		5.5			7.5				11			15	

Performance certified is for installation type D - Ducted inlet, Ducted outlet. Performance ratings do not include the effects of appurtenances (accessories).

The A-weighted sound ratings shown have been calculated per AMCA International Standard 301. Values shown are for inlet LwA sound power levels for installation type D: ducted inlet, ducted outlet. Ratings include the effects of duct end correction.
Power supply 415V/3Ph/50Hz.

50 Hz CC 630/9T HP

Hub size : 210mm



Peak Absorbed Power (kW)

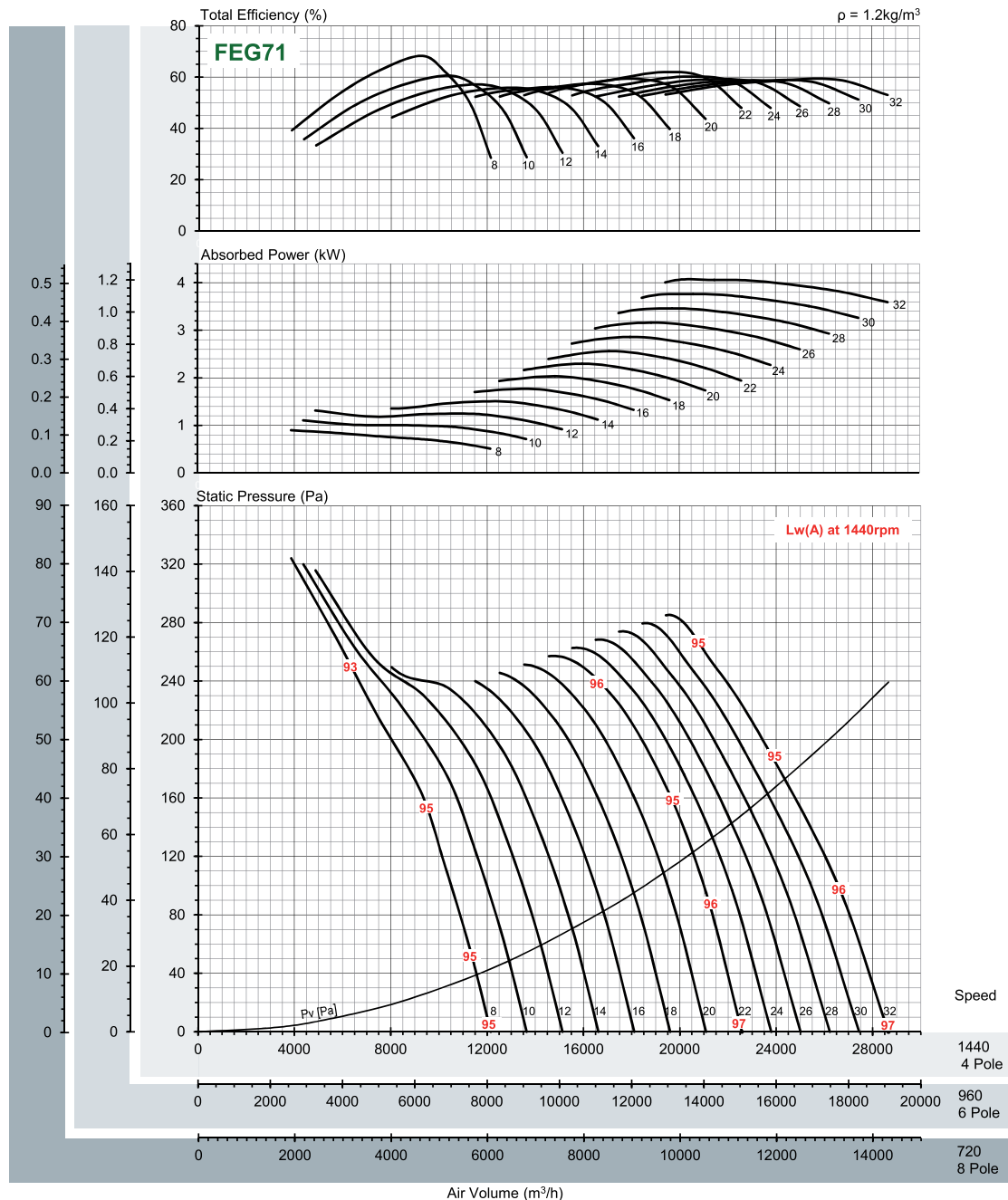
N (rpm)	Blade Pitch Angle [°]													LwA dB(A)
	8°	10°	12°	14°	16°	18°	20°	22°	24°	26°	28°	30°	32°	
960 motor	0.189	0.231	0.257	0.294	0.341	0.389	0.438	0.488	0.537	0.589	0.638	0.689	0.743	-27
1440 motor	0.639	0.781	0.867	0.993	1.150	1.312	1.479	1.647	1.814	1.987	2.154	2.325	2.508	-16
2880 motor	5.112	6.246	6.936	7.945	9.196	10.49	11.83	13.17	14.51	15.89	17.23	18.60	20.06	0

Performance certified is for installation type D - Ducted inlet, Ducted outlet. Performance ratings do not include the effects of appurtenances (accessories).

The A-weighted sound ratings shown have been calculated per AMCA International Standard 301. Values shown are for inlet LwA sound power levels for installation type D: ducted inlet, ducted outlet. Ratings include the effects of duct end correction.
Power supply 415V/3Ph/50Hz.

50 Hz CC 710/9T HP

Hub size : 210mm



Peak Absorbed Power (kW)

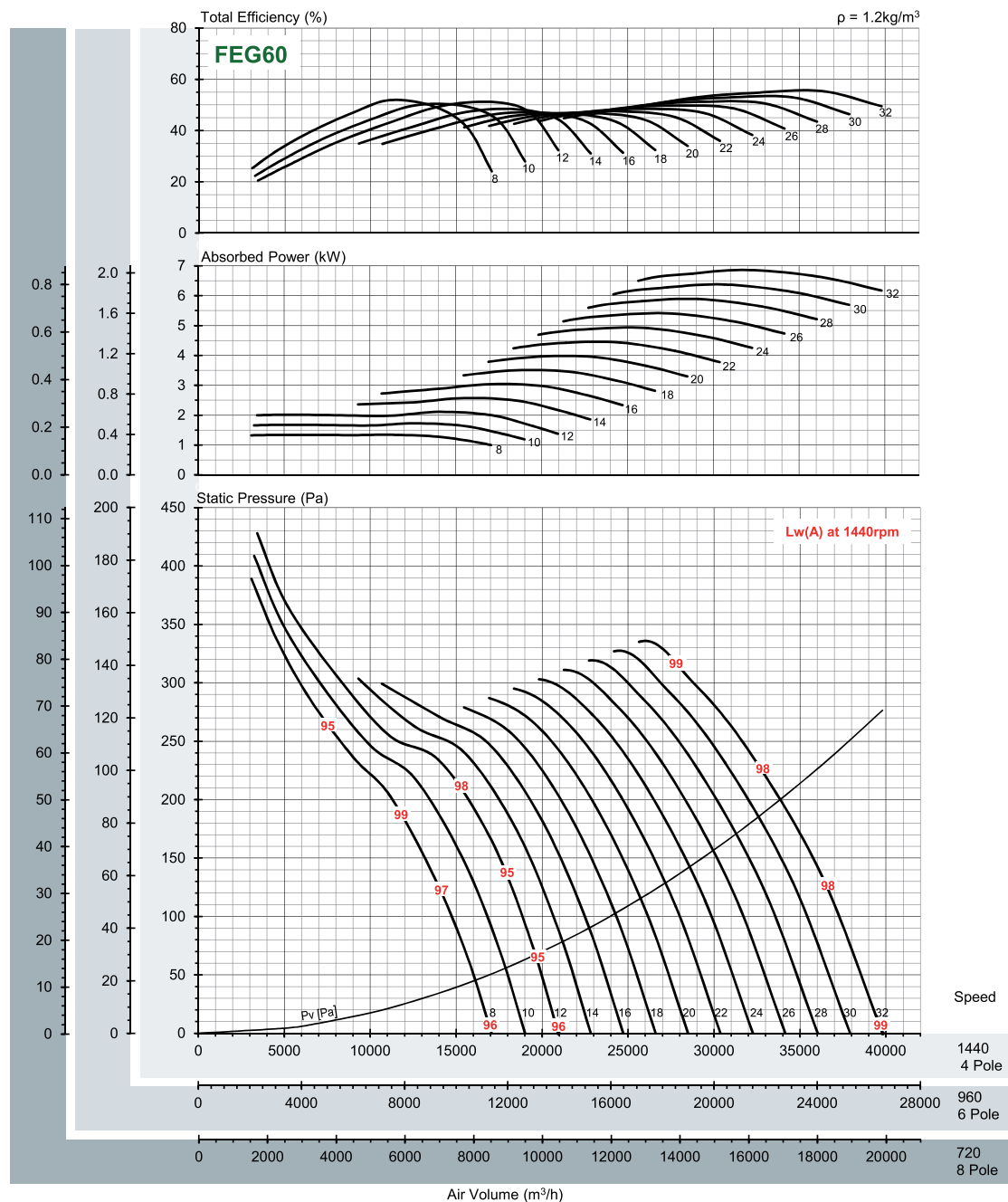
N (rpm)	Blade Pitch Angle [°]													LwA dB(A)
	8°	10°	12°	14°	16°	18°	20°	22°	24°	26°	28°	30°	32°	
720 motor	0.112	0.138	0.164	0.188	0.221	0.254	0.287	0.320	0.358	0.395	0.433	0.470	0.508	-17
960 motor	0.266	0.328	0.389	0.446	0.524	0.603	0.681	0.759	0.848	0.937	1.025	1.114	1.203	-10
1440 motor	0.899	1.106	1.312	1.505	1.770	2.034	2.298	2.562	2.862	3.161	3.461	3.760	4.060	0

Performance certified is for installation type D - Ducted inlet, Ducted outlet. Performance ratings do not include the effects of appurtenances (accessories).

The A-weighted sound ratings shown have been calculated per AMCA International Standard 301. Values shown are for inlet LwA sound power levels for installation type D: ducted inlet, ducted outlet. Ratings include the effects of duct end correction.
Power supply 415V/3Ph/50Hz.

50 Hz CC 800/6T HP

Hub size : 320mm



Peak Absorbed Power (kW)

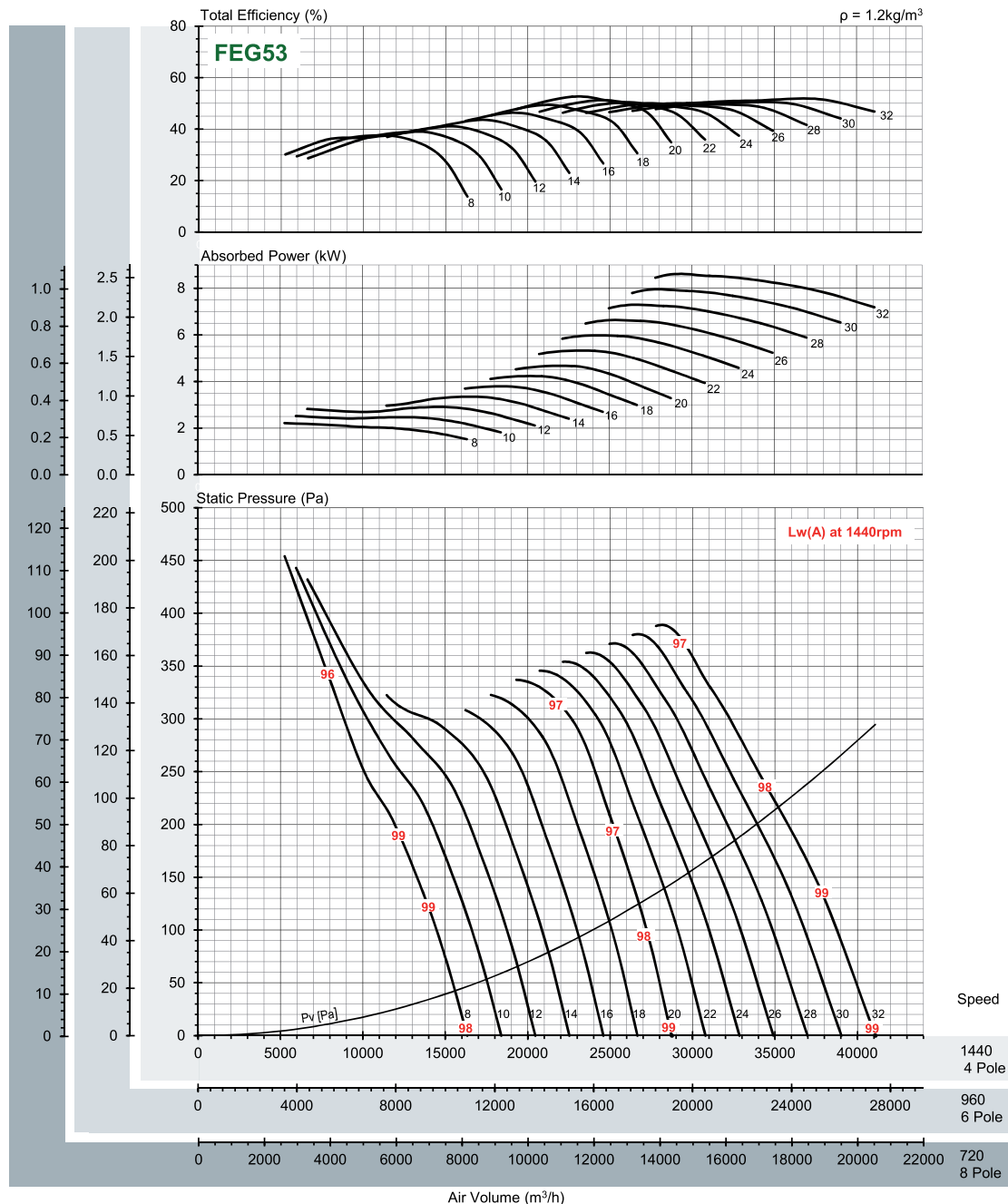
N (rpm)	Blade Pitch Angle [°]													LwA dB(A)
	8°	10°	12°	14°	16°	18°	20°	22°	24°	26°	28°	30°	32°	
720 motor	0.168 0.18	0.216 0.37	0.264 0.75	0.322	0.380	0.437 0.55	0.495	0.554	0.615 0.75	0.675	0.736	0.797 1.1	0.858	-18
960 motor	0.398 0.55	0.512 0.75	0.625	0.762	0.900 1.1	1.037	1.174	1.313 1.5	1.457	1.601	1.745 2.2	1.889	2.033	-11
1440 motor	1.343 1.5	1.727 2.2	2.110	2.573 3	3.036	3.499 4	3.962	4.431	4.917 5.5	5.403	5.888	6.374 7.5	6.860	0

Performance certified is for installation type D - Ducted inlet, Ducted outlet. Performance ratings do not include the effects of appurtenances (accessories).

The A-weighted sound ratings shown have been calculated per AMCA International Standard 301. Values shown are for inlet LwA sound power levels for installation type D: ducted inlet, ducted outlet. Ratings include the effects of duct end correction.
Power supply 415V/3Ph/50Hz.

50 Hz CC 800/9T HP

Hub size : 320mm



Peak Absorbed Power (kW)

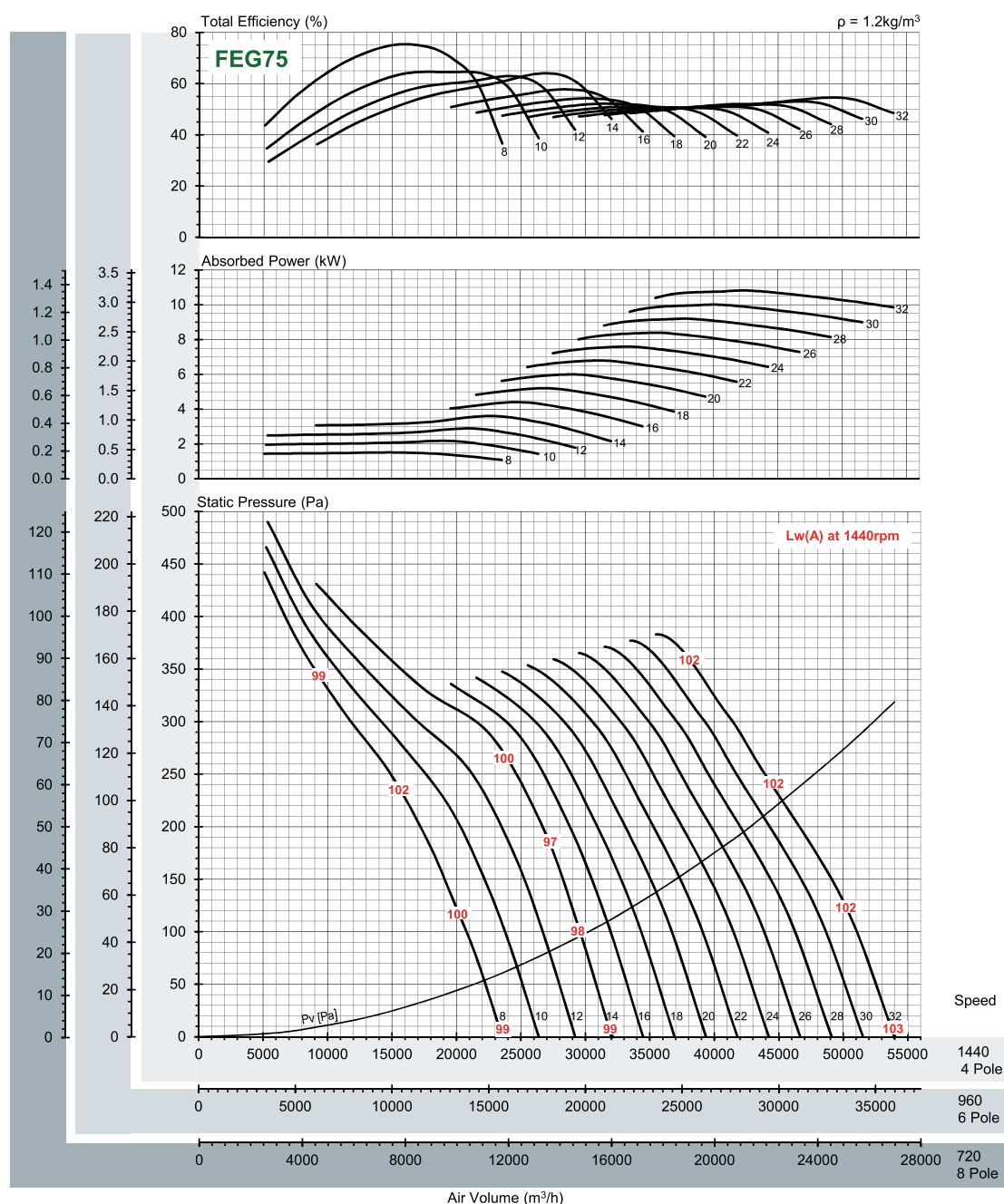
N (rpm)	Blade Pitch Angle [°]													LwA dB(A)
	8°	10°	12°	14°	16°	18°	20°	22°	24°	26°	28°	30°	32°	
720 motor	0.278	0.316	0.362	0.417	0.473	0.528	0.584	0.664	0.744	0.825	0.905	0.986	1.066	-17
960 motor	0.658	0.748	0.857	0.989	1.120	1.252	1.383	1.574	1.764	1.955	2.146	2.337	2.527	-10
1440 motor	2.221	2.524	2.894	3.338	3.781	4.225	4.668	5.312	5.955	6.599	7.243	7.886	8.530	0

Performance certified is for installation type D - Ducted inlet, Ducted outlet. Performance ratings do not include the effects of appurtenances (accessories).

The A-weighted sound ratings shown have been calculated per AMCA International Standard 301. Values shown are for inlet LwA sound power levels for installation type D: ducted inlet, ducted outlet. Ratings include the effects of duct end correction.
Power supply 415V/3Ph/50Hz.

50 Hz CC 900/6T HP

Hub size : 320mm



Peak Absorbed Power (kW)

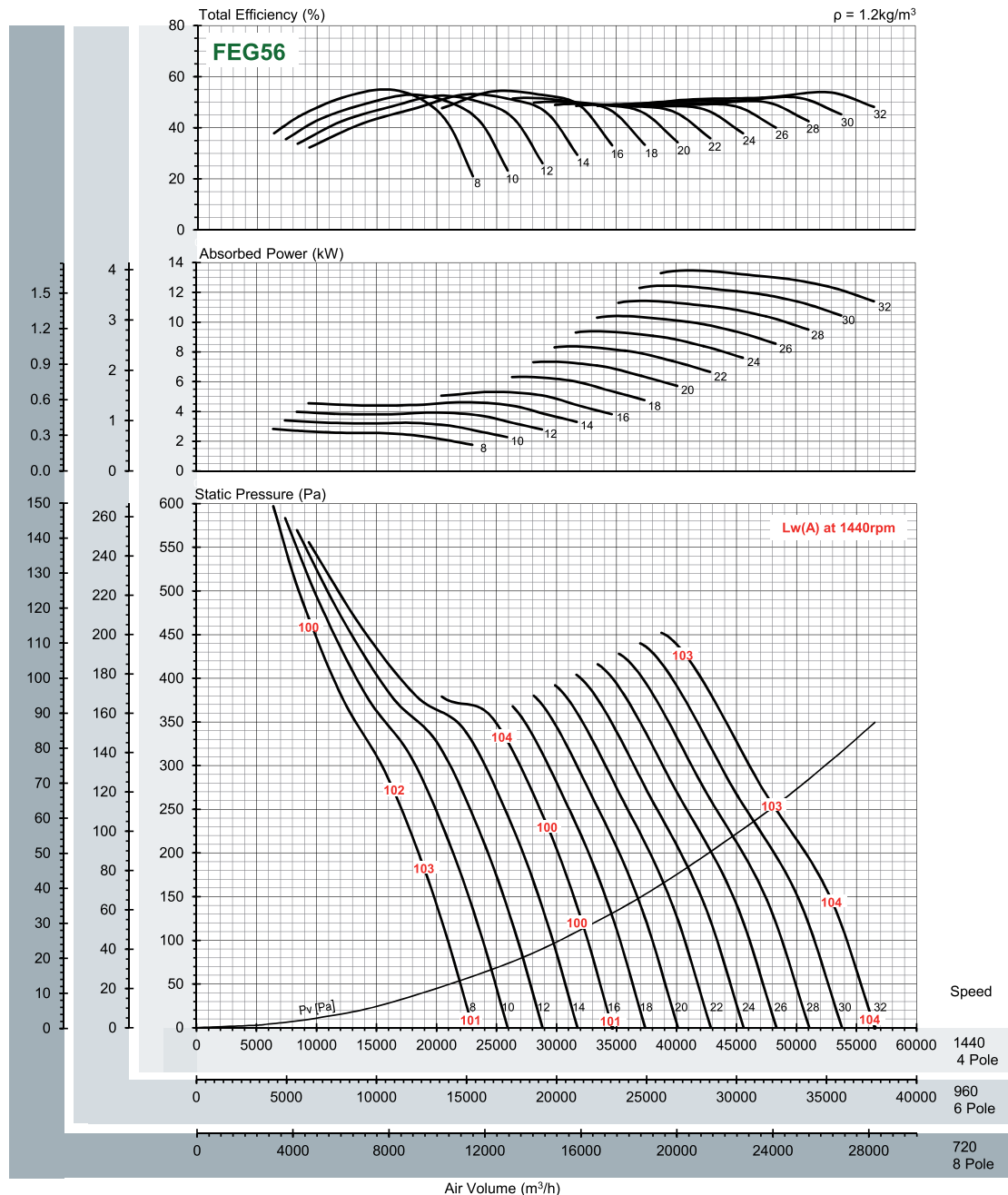
N (rpm)	Blade Pitch Angle [°]													LwA dB(A)
	8°	10°	12°	14°	16°	18°	20°	22°	24°	26°	28°	30°	32°	
720 motor	0.190	0.273	0.362	0.451	0.551	0.650	0.750	0.849	0.949	1.048	1.147	1.247	1.347	-17
960 motor	0.449	0.647	0.858	1.070	1.305	1.541	1.777	2.013	2.248	2.484	2.720	2.956	3.193	-10
1440 motor	1.516	2.182	2.897	3.611	4.406	5.202	5.997	6.793	7.588	8.384	9.179	9.975	10.775	0

Performance certified is for installation type D - Ducted inlet, Ducted outlet. Performance ratings do not include the effects of appurtenances (accessories).

The A-weighted sound ratings shown have been calculated per AMCA International Standard 301. Values shown are for inlet LwA sound power levels for installation type D: ducted inlet, ducted outlet. Ratings include the effects of duct end correction.
Power supply 415V/3Ph/50Hz.

50 Hz CC 900/9T HP

Hub size : 320mm



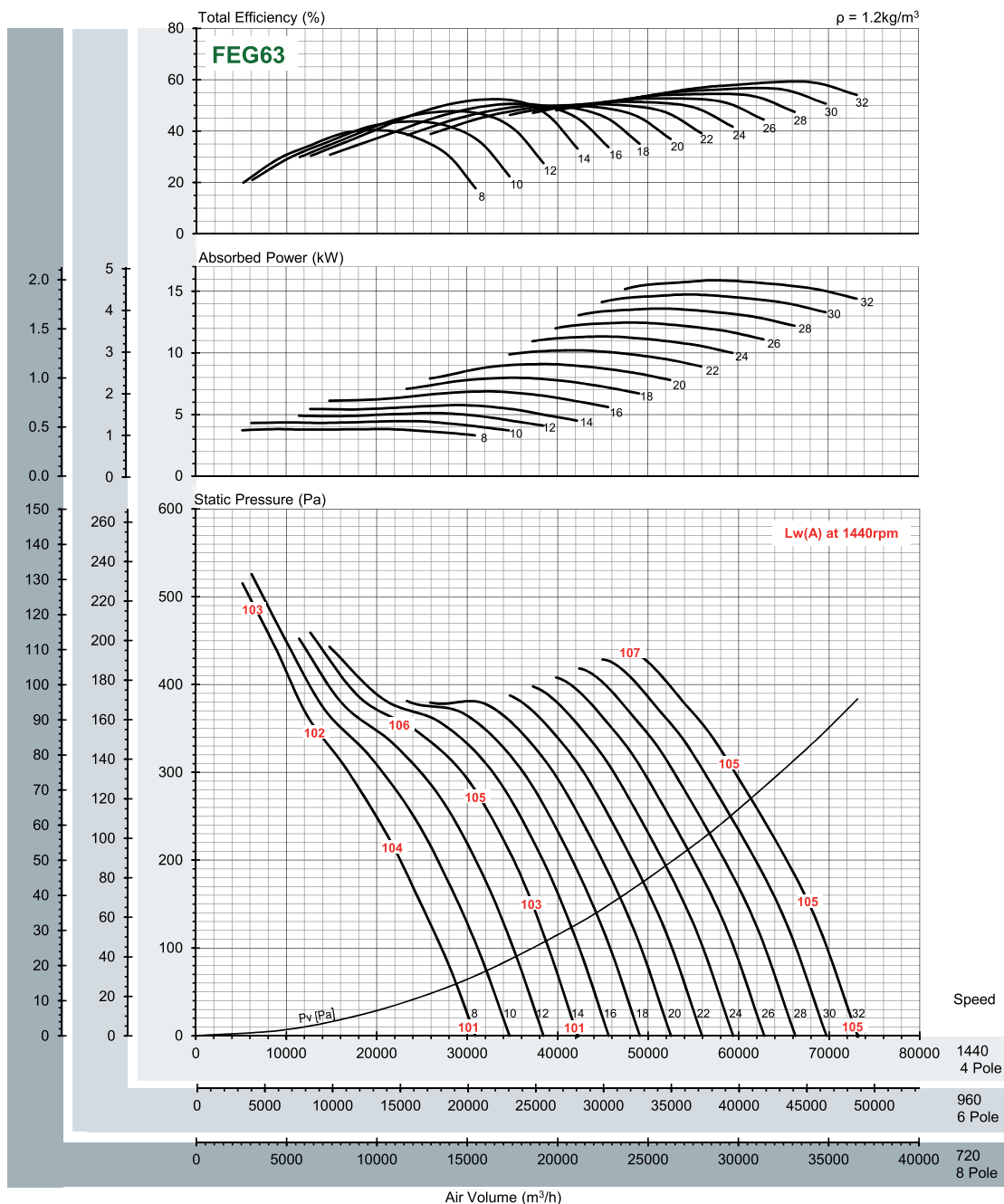
N (rpm)	Peak Absorbed Power (kW)													LwA dB(A)
	Blade Pitch Angle [°]													
720 motor	0.353	0.425	0.497	0.578	0.665	0.789	0.914	1.039	1.163	1.288	1.413	1.537	1.662	-17
	0.37	0.55		0.75			1.1			1.5		2.2		
960 motor	0.838	1.008	1.179	1.370	1.576	1.871	2.167	2.462	2.757	3.053	3.348	3.644	3.939	-10
		1.1		1.5		2.2		3			4			
1440 motor	2.827	3.403	3.979	4.624	5.318	6.315	7.312	8.309	9.306	10.30	11.30	12.30	13.29	0
	3	4			5.5		7.5		11			15		

Performance certified is for installation type D - Ducted inlet, Ducted outlet. Performance ratings do not include the effects of appurtenances (accessories).

The A-weighted sound ratings shown have been calculated per AMCA International Standard 301. Values shown are for inlet LwA sound power levels for installation type D: ducted inlet, ducted outlet. Ratings include the effects of duct end correction.
Power supply 415V/3Ph/50Hz.

50 Hz CC 1000/6T HP

Hub size : 320mm



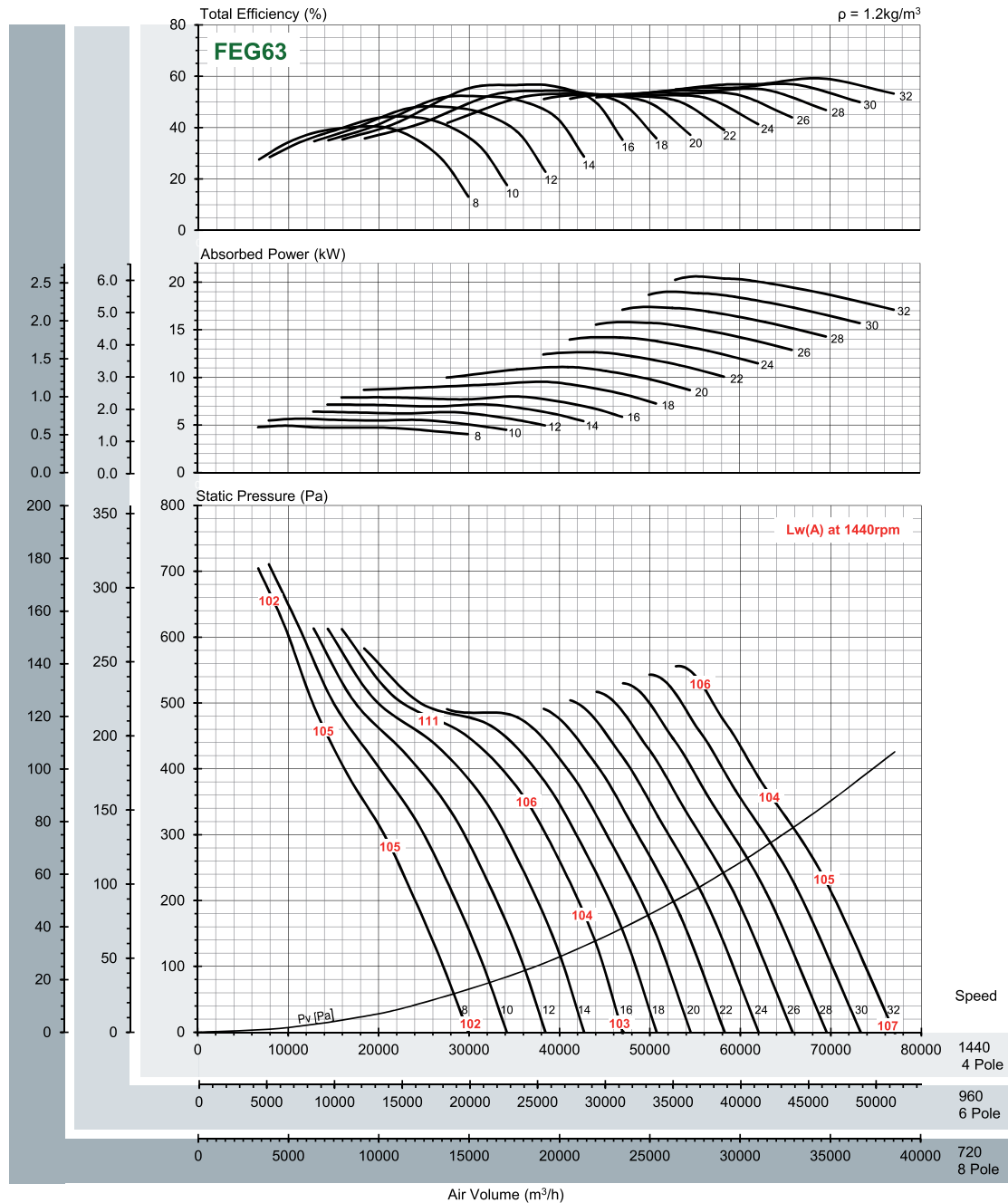
N (rpm)	Peak Absorbed Power (kW)													LwA dB(A)
	8°	10°	12°	14°	16°	18°	20°	22°	24°	26°	28°	30°	32°	
720 motor	0.476	0.558	0.639	0.720	0.859	0.998	1.137	1.276	1.414	1.553	1.692	1.837	1.982	-18
960 motor	1.129	1.321	1.514	1.706	2.035	2.364	2.694	3.023	3.353	3.682	4.011	4.354	4.698	-10
1440 motor	3.81	4.46	5.11	5.76	6.87	7.98	9.09	10.20	11.32	12.43	13.54	14.70	15.86	0

Performance certified is for installation type D - Ducted inlet, Ducted outlet. Performance ratings do not include the effects of appurtenances (accessories).

The A-weighted sound ratings shown have been calculated per AMCA International Standard 301. Values shown are for inlet LwA sound power levels for installation type D: ducted inlet, ducted outlet. Ratings include the effects of duct end correction.
Power supply 415V/3Ph/50Hz.

50 Hz CC 1000/9T HP

Hub size : 320mm



Peak Absorbed Power (kW)

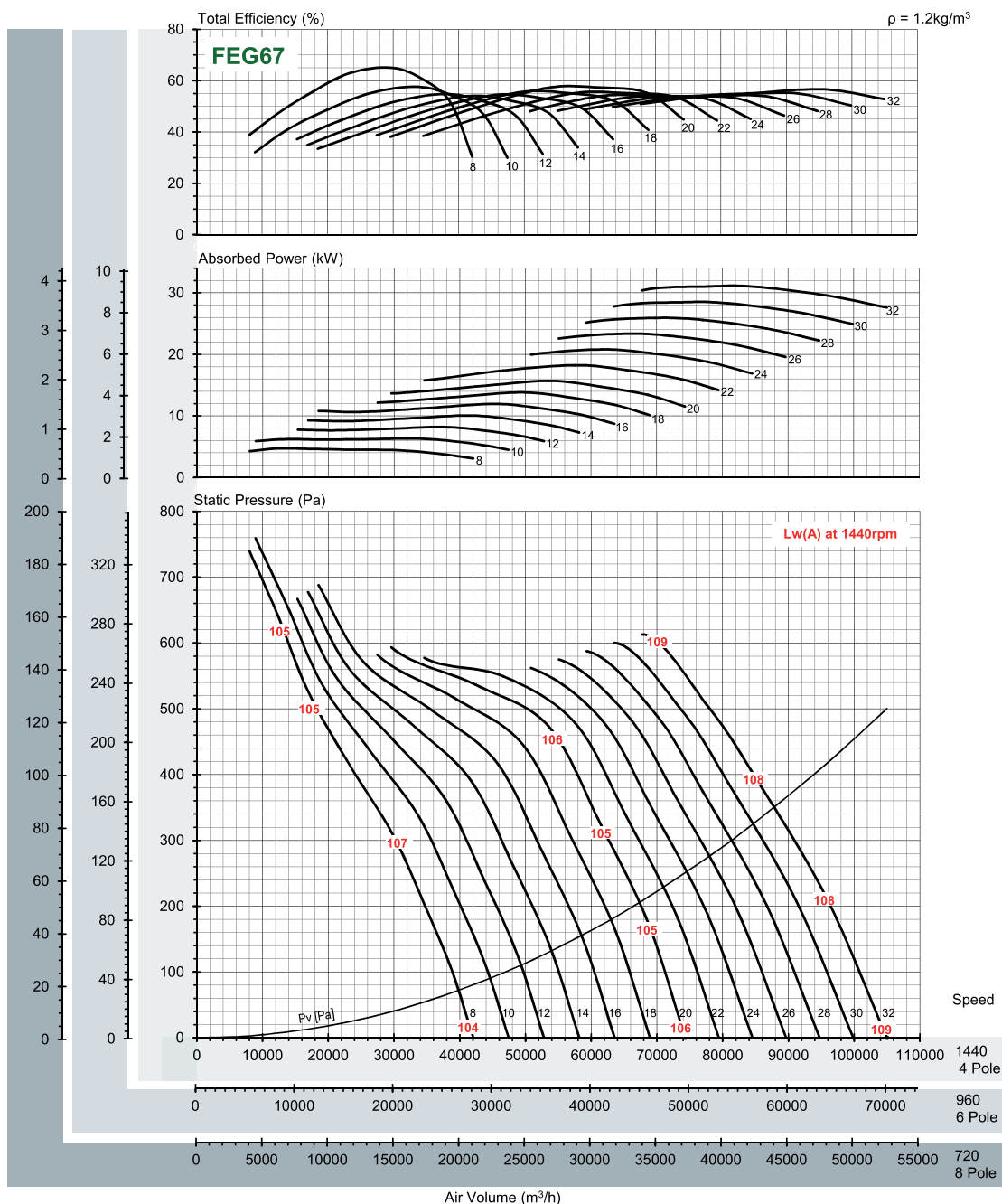
N (rpm)	Blade Pitch Angle [°]													LwA dB(A)
	8°	10°	12°	14°	16°	18°	20°	22°	24°	26°	28°	30°	32°	
720 motor	0.617	0.709	0.801	0.897	0.999	1.193	1.387	1.580	1.774	1.967	2.161	2.355	2.548	-18
		0.75		1.1			1.5			2.2		3		
960 motor	1.462	1.681	1.900	2.127	2.369	2.828	3.287	3.745	4.204	4.663	5.122	5.581	6.040	-10
	1.5		2.2			3		4		5.5		7.5		
1440 motor	4.93	5.67	6.41	7.18	8.00	9.54	11.09	12.64	14.19	15.74	17.29	18.84	20.39	0
	5.5		7.5			11		15		18.5		22		

Performance certified is for installation type D - Ducted inlet, Ducted outlet. Performance ratings do not include the effects of appurtenances (accessories).

The A-weighted sound ratings shown have been calculated per AMCA International Standard 301. Values shown are for inlet LwA sound power levels for installation type D: ducted inlet, ducted outlet. Ratings include the effects of duct end correction.
Power supply 415V/3Ph/50Hz.

50 Hz CC 1120/6T HP

Hub size : 420mm



Peak Absorbed Power (kW)

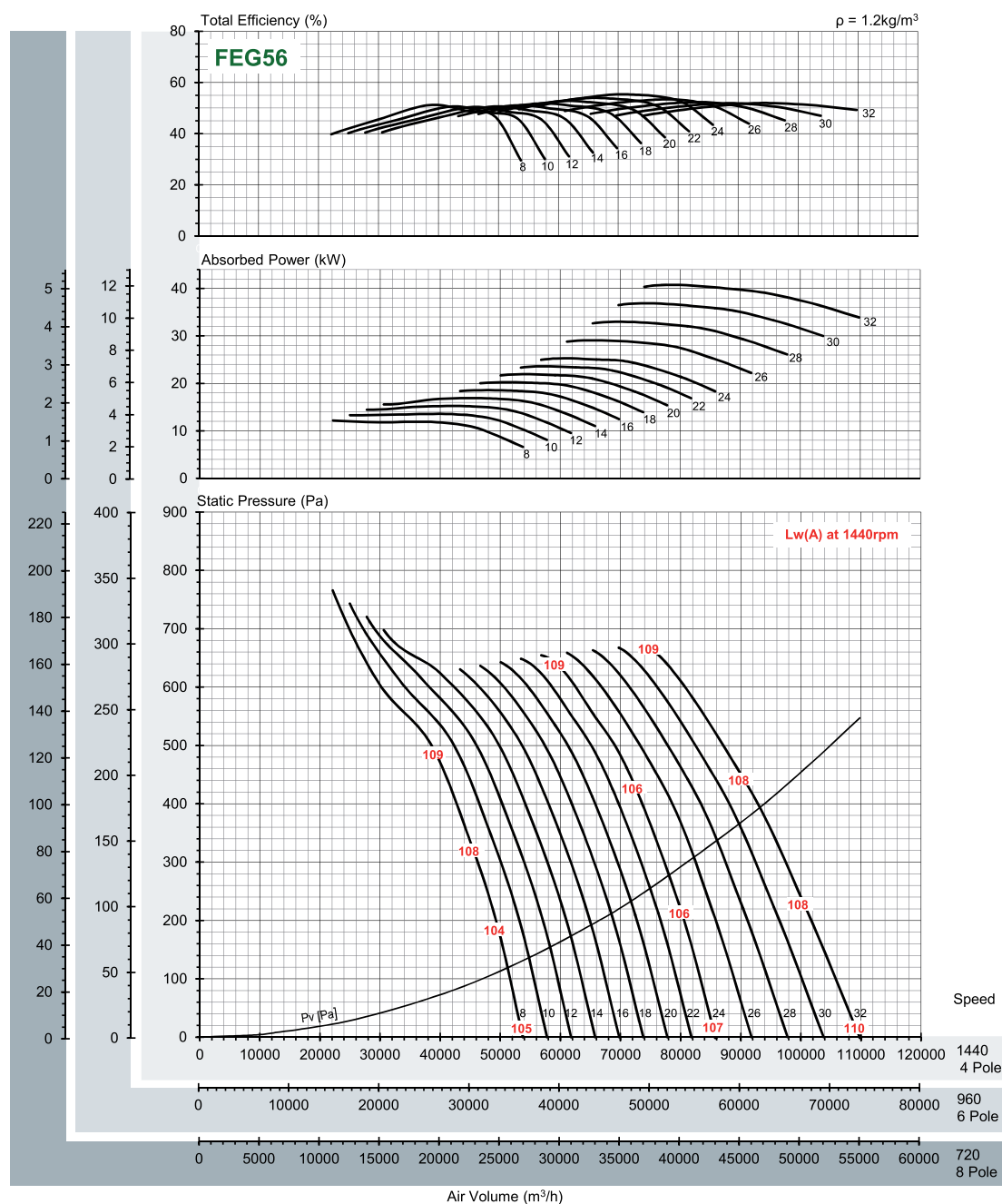
N (rpm)	Blade Pitch Angle [°]													LwA dB(A)
	8°	10°	12°	14°	16°	18°	20°	22°	24°	26°	28°	30°	32°	
720 motor	0.589	0.791	1.025	1.259	1.493	1.727	1.961	2.281	2.600	2.920	3.239	3.559	3.878	-18
960 motor	1.396	1.874	2.429	2.984	3.539	4.094	4.649	5.406	6.163	6.921	7.678	8.435	9.192	-10
1440 motor	4.713	6.325	8.198	10.07	11.94	13.82	15.69	18.25	20.80	23.36	25.91	28.47	31.02	0

Performance certified is for installation type D - Ducted inlet, Ducted outlet. Performance ratings do not include the effects of appurtenances (accessories).

The A-weighted sound ratings shown have been calculated per AMCA International Standard 301. Values shown are for inlet LwA sound power levels for installation type D: ducted inlet, ducted outlet. Ratings include the effects of duct end correction.
Power supply 415V/3Ph/50Hz.

50 Hz CC 1120/9T HP

Hub size : 420mm



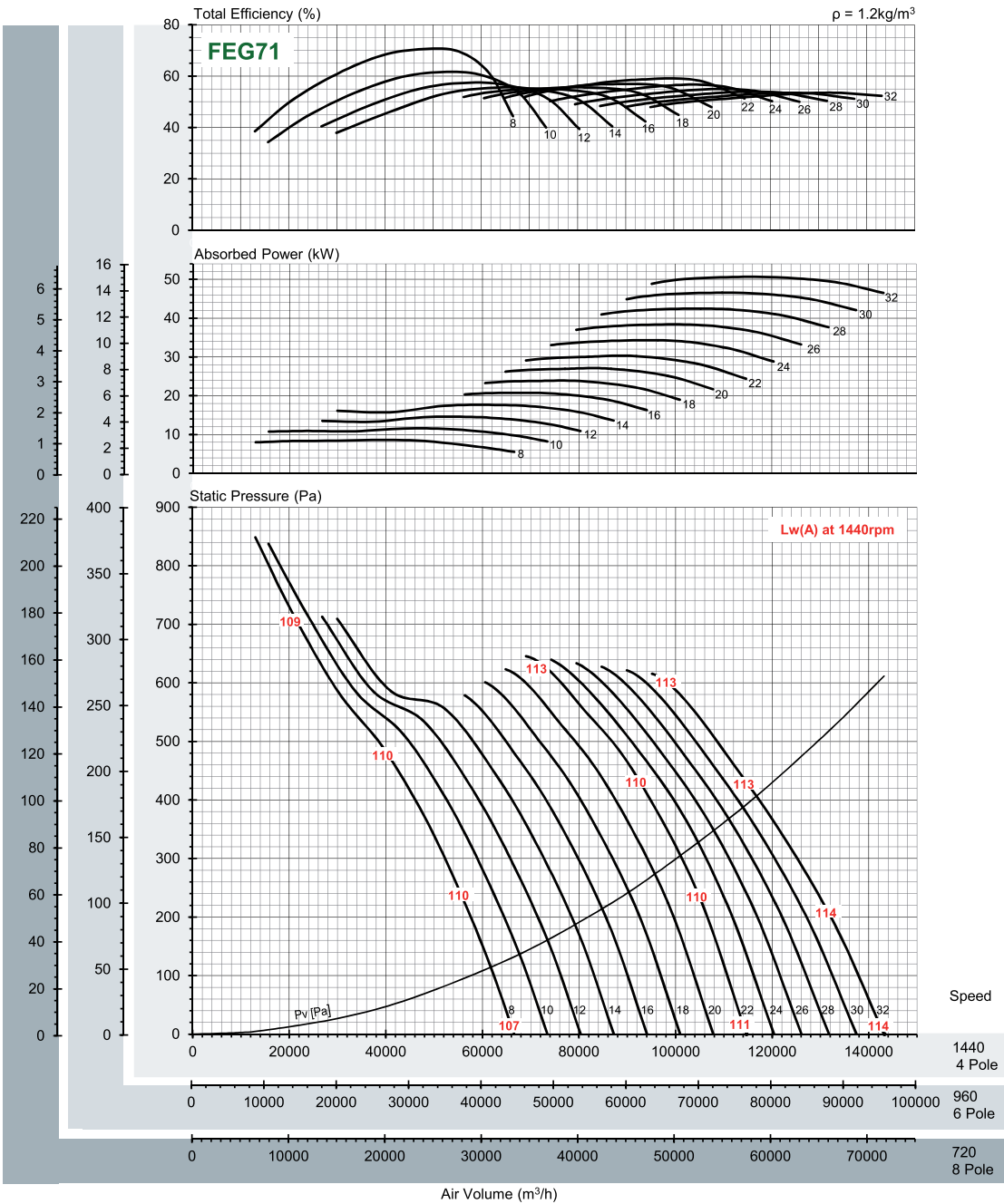
N (rpm)	Peak Absorbed Power (kW)													LwA dB(A)
	Blade Pitch Angle [°]													
	8°	10°	12°	14°	16°	18°	20°	22°	24°	26°	28°	30°	32°	
720 motor	1.523	1.690	1.895	2.101	2.306	2.511	2.716	2.922	3.127	3.600	4.081	4.562	5.042	-17
960 motor	3.610	4.006	4.493	4.979	5.466	5.952	6.439	6.926	7.412	8.534	9.673	10.81	11.95	-10
	4			5.5			7.5				11		15	
1440 motor	12.18	13.52	15.16	16.81	18.45	20.09	21.73	23.37	25.02	28.80	32.65	36.49	40.34	0
	15			18.5		22			30		37		45	

Performance certified is for installation type D - Ducted inlet, Ducted outlet. Performance ratings do not include the effects of appurtenances (accessories).

The A-weighted sound ratings shown have been calculated per AMCA International Standard 301. Values shown are for inlet LwA sound power levels for installation type D: ducted inlet, ducted outlet. Ratings include the effects of duct end correction.
Power supply 415V/3Ph/50Hz.

50 Hz CC 1250/6T HP

Hub size : 420mm



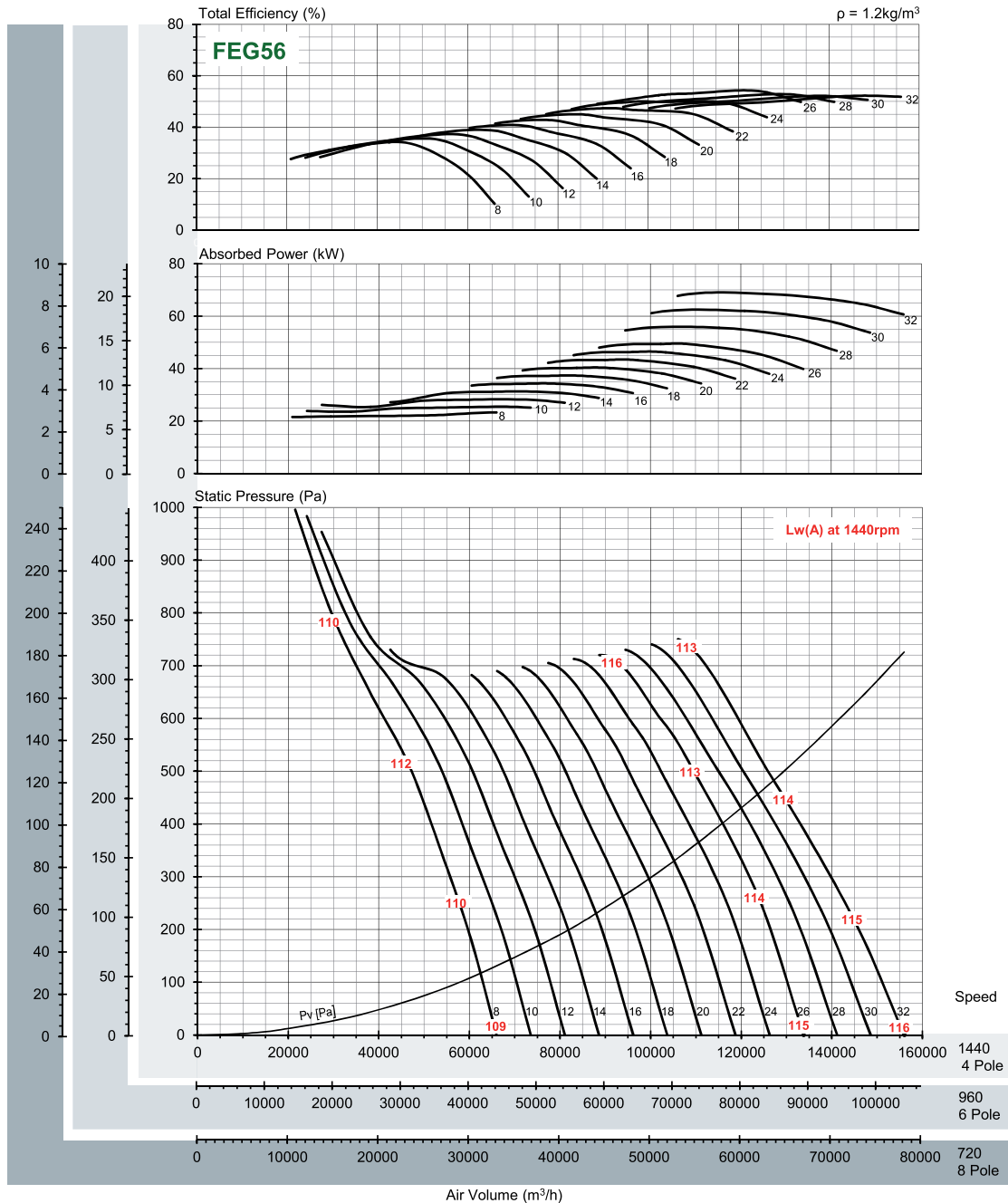
Peak Absorbed Power (kW)														
N (rpm)	Blade Pitch Angle [°]													LwA dB(A)
	8°	10°	12°	14°	16°	18°	20°	22°	24°	26°	28°	30°	32°	
720 motor	1.078 1.1	1.444 1.5	1.816 2.2	2.204 2.5	2.591 3	2.978 4	3.369 4	3.776 10.16	4.287 11.37	4.798 12.58	5.308 13.79	5.819 15.00	6.329 18.5	-18
960 motor	2.555 3	3.422 4	4.305 5.5	5.223 7.5	6.142 11	7.060 11	7.986 34.30	8.951 38.38	10.16 42.47	11.37 46.55	12.58 50.64	13.79 55	15.00 50.64	-10
1440 motor	8.624 11	11.55 15	14.53 18.5	17.63 22	20.73 30	23.83 30	26.95 37	30.21 45	34.30 45	38.38 55	42.47 55	46.55 55	50.64 55	0

Performance certified is for installation type D - Ducted inlet, Ducted outlet. Performance ratings do not include the effects of appurtenances (accessories).

The A-weighted sound ratings shown have been calculated per AMCA International Standard 301. Values shown are for inlet LwA sound power levels for installation type D: ducted inlet, ducted outlet. Ratings include the effects of duct end correction.
Power supply 415V/3Ph/50Hz.

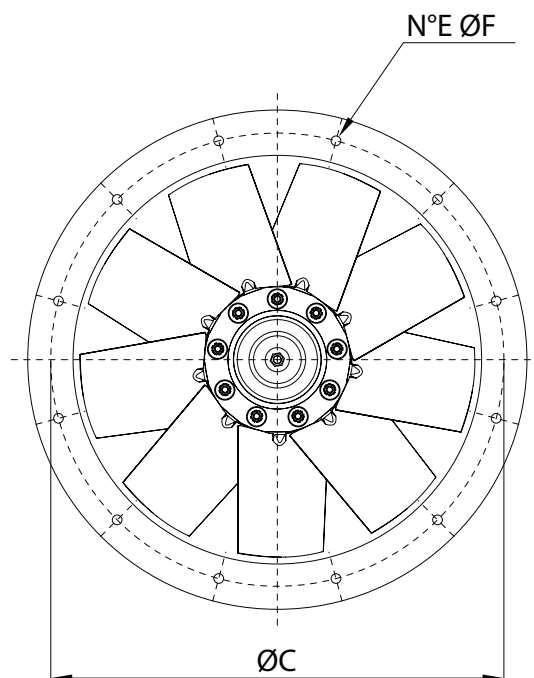
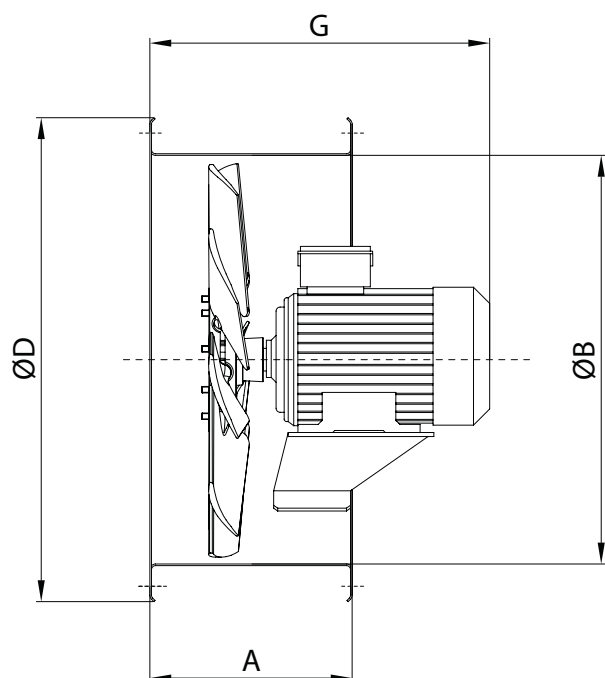
50 Hz CC 1250/9T HP

Hub size : 420mm



Peak Absorbed Power (kW)

N (rpm)	Blade Pitch Angle [°]													LwA dB(A)
	8°	10°	12°	14°	16°	18°	20°	22°	24°	26°	28°	30°	32°	
720 motor	2.914 3	3.187	3.537 4	3.910	4.282	4.655	5.032 5.5	5.411	5.791	6.171 7.5	6.946	7.747 11	8.548	-18
960 motor	6.906 7.5	7.555	8.384	9.267 11	10.15	11.03	11.93	12.83 15	13.73	14.63	16.47	18.36 18.5	20.26 22	-10
1440 motor	23.31 30	25.50	28.30	31.28 37	34.26	37.24	40.25 45	43.29	46.33 55	49.37	55.57	61.98 75	68.39	0



TYPE	A	ØB	ØC	ØD	E	ØF	G*	kg**
CC-HP 40	230	400	450	496	8	12	430	30
CC-HP 45	230	450	500	546	8	12	430	38
CC-HP 50	250	500	560	598	12	12	440	39
CC-HP 56	250	560	620	658	12	12	440	42
CC-HP 63	250	635	690	730	12	12	470	52
CC-HP 71	250	710	770	810	16	12	520	66
CC-HP 80	350	800	860	910	16	12	580	125
CC-HP 90	350	900	970	1030	16	16	680	180
CC-HP 100	350	1000	1070	1130	16	16	750	215
CC-HP 112	350	1120	1190	1250	20	16	750	235
CC-HP 125	350	1250	1320	1380	20	16	750	265

Dimensions in mm / Indicative weights

Performance certified is for installation type D - Ducted inlet, Ducted outlet. Performance ratings do not include the effects of appurtenances (accessories).

The A-weighted sound ratings shown have been calculated per AMCA International Standard 301. Values shown are for inlet LwA sound power levels for installation type D: ducted inlet, ducted outlet. Ratings include the effects of duct end correction.

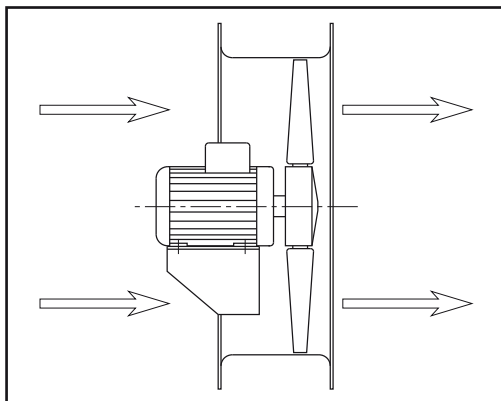
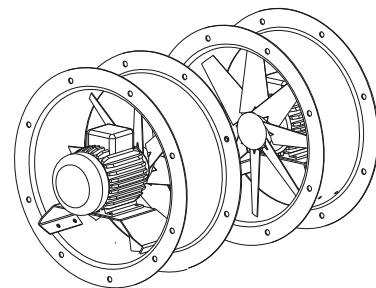
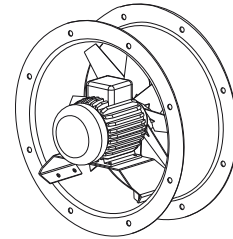
SHORT CASING

The fans of CC-HP series are in short casing execution as standard, for ease of transport and installation and for cost saving based on Motor KW & Pole. This execution is also suitable for assembling in the initial or final part of a ducted system. In this case a correct installation foresees the use of the inlet/outlet bell mouth "CCbo" (see accessories).

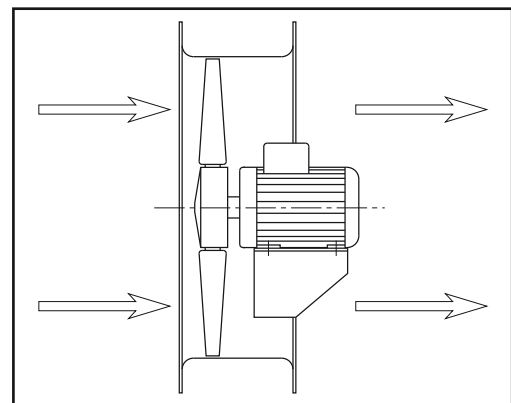
MULTISTAGE

The fans of the CC-HP series foresee the possibility of multistage execution, iso-rotating or contra rotating (assembly of two or more single-stage fans, with impellers rotating in the same or in the opposite direction). This configuration allows to considerably increase the pressure developed. Specifically, the CC-HP series with two contra-rotating stages develops 2.5 times the pressure of a single-stage fan of equal diameter and speed, with a power absorption not bigger than 2 times. In addition, the multi-stage option, compared to the single-stage one, has a favourable relation performances/noise, as the required performance can be achieved with a lower rotational speed.

* Performance of Multistage are not AMCA licensed.



Standard airflow from MOTOR to IMPELLER



Upon request airflow from MOTOR to IMPELLER

Note:

in this catalogue, a selection only of the performances obtainable with the CC-HP series is shown, able to solve several demands and chosen to combine cost/ performances and delivery time. Upon request, our technical service is able to design several different configurations and installations, based on customer specs.